

# CENTURY PRECISION INDUSTRY



BROCHURE 2024

## ABOUT US: CENTURY PRECISION INDUSTRY CO. LTD.

### WORKING PRINCIPLES& CREDENTIALS

- TRANSPARENT COMMUNICATION
- RISK AVOIDANCE & MITIGATION
- 80/20 MANDATE
- GLOBAL SUPPLY CHAIN VIEW
- FORTUNE 500 EXPERIENCE

### 80/20 MANDATE: OUR KEY FOR SOLID GROWTH

- CUSTOMER FOCUSED INNOVATION TO CATCH THE “80 OPPORTUNITIES”
- RECOGNIZING THE RELEVANCE OF “THE 20”S

### OUR WAYS OF WORKING

- PROACTIVE AND DETAIL ORIENTED
- CUSTOMER CENTRIC APPROACH
- LISTEN, FOCUS AND SIMPLY
- PARTNERSHIP DURING CHALLENGING TIMES
- MARKET INTELLIGENCE AND TREND AWARENESS
- UNLOCKING ADDITIONAL VALUE

### CORE PRODUCT OFFERING

- BICYCLE DISC BRAKES

### QUALITY ASSURANCE

- MEETING EN/DIN/ISO STANDARDS  
DIN 15194:2018-11  
ISO 4210, etc.

## KEY FACTS ABOUT OUR HYDRAULIC DISC BRAKES

### PREMIUM HYDRAULIC DISC BRAKES

- SERVING MAJOR GERMAN-BASED BICYCLE MANUFACTURERS

### BROAD RANGE OF PRODUCT OFFERING

- COMPARABLE QUALITY AND FEATURES AT A COMPETITIVE COST TO INDUSTRY LEADERS

### EN/DIN 15194, ISO 4210 COMPLIANT

- ADDITIONALLY IN COMPLIANCE WITH ROHS, REACH (AFPS GS), AND CALIFORNIA PROP 65

### 4 WEEKS ORDER-TO-SHIP

- EVEN DURING PEAK SELLING SEASONS

## OUR PLEDGE TO OPERATIONAL EXCELLENCE

**WE PARTNER WITH OUR CUSTOMERS TO PREDICT AND MITIGATE RISKS IN OUR SUPPLY CHAIN PERFORMANCE.**

### LEAD TIME

- 30 days for all strategic customers

### ON-TIME DELIVERY

- 100%, even during rush periods in 2022

### VOLUME ACHIEVEMENT

- Over 150,000 sets of brakes delivered on time for a key customer

**OUR PRODUCTS MEET THE HIGHEST STANDARDS OF QUALITY COMPLIANCE.**

### CUSTOMER SATISFACTION

- No systematic complaints since inception

**WE ARE DEDICATED TO PROVIDING EXCEPTIONAL SERVICE AND KEEPING OUR PROMISES TO OUR CUSTOMERS.**

### SERVICE COMMITMENT

- Maintain inventory and safety stock
- Provide upfront and transparent communication
- Focus on solutions, no excuses

**OUR CUSTOMER TESTIMONIES SPEAK TO OUR SUCCESS.**

### UNPARALLELED SUPPLIER PERFORMANCE

- One of the best suppliers
- The only supplier who had never caused production disruption for late delivery
- Excellent brake force for both dry & wet condition

## FACTS AND DATA

### OPERATIONAL RESILIENCE AND PERFORMANCE

Example: 100% OTD with large and urgent orders, e.g., 60,000+ sets for a single delivery, **despite challenges in**

- COVID lockdown
- Logistics costs skyrocketed seven times during the pandemic
- Tier-2 supply chain breakdown driven by COVID

### COMPLIANCE AND QUALITY ASSURANCE

#### CERTIFICATIONS

- Certified EN/DIN 15194 in Germany
- Compliant with Reach (AfPS GS) and RoHS
- 100% break performance check per delivery
- EN 15194 compliance verified for each delivery

### STRATEGIC INVENTORY AND FINANCIAL SUPPORT

Example: We maintain inventory at key German bike manufacturing plants to address urgent demands, providing additional financial support alongside regular order fulfillment.

### DELIVERY AND QUALITY EXCELLENCE

- Upfront and transparent communication
- Comprehensive risk avoidance and mitigation solutions
- Exceptional after-sales service

## OUR MANUFACTURING FACILITY



**HEADQUARTERS:** CHANGHUA, TAIWAN

**FACILITY LOCATION:** ZHEJIANG, CHINA

### **PRODUCTION CAPACITY**

- 2-Piston and 4-Piston Hydraulic Disc Brakes: 200,000 sets per month

### **OPERATIONAL HIGHLIGHTS**

- 30-day order-to-delivery timeframe for strategic clients
- Comprehensive supply chain, R&D, and engineering capabilities with over 100 patents
- Advanced ERP system with most parts produced in-house

## PRODUCTION FACILITY

CNC



MACHINING



PRESSING



ASSEMBLY



DRILLING & TAPPING



# TESTING AND INSPECTION

MATERIAL TENSILE



GRIP DISTANCE TEST



LIFE TEST



PRECISION PORJECTOR



**COMPREHENSIVE  
QUALITY ASSURANCE  
100% INSPECTION  
PRIOR TO EX-WORKS**



BRAKE FORCE (PAD) TEST



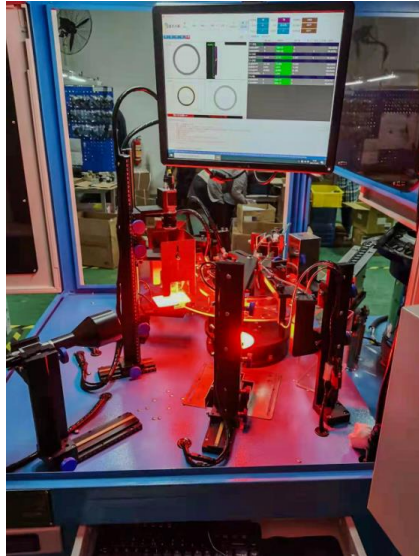
OIL LEAKAGE 100% TESTED



EX-WORKS TESTS

## TESTING AND INSPECTION

OPTICAL INSPECTION



HIGH & LOW TEMPERATURE



HIGH TEMPERATURE LIFE TEST



BRAKE PERFORMANCE TESTING CENTER FOR EN, DIN AND ISO

## PRODUCTION AND INSPECTION CAPABILITIES

### IN-HOUSE ENGINEERING, PRODUCTION, AND QUALITY STAFF

Comprehensive components production and assembly.

### QUALITY ASSURANCE

Adherence to certification and test standards by accredited institutes.

Each batch of assemblies undergoes 100% pre-shipment inspection.

### PRODUCTION SCOPE

Manufacturing of 2-Piston, 4-Piston, and more.

- Dedicated team consisting of over 80 professionals out of a total workforce of 400+
- Utilization of automatic and semi-automatic machines for achieving precision tolerance
- Certified to ISO 9001
- Testing conducted according to ISO 4210, EN 14766, and EN 15194 standards
- Local testing by TUV & SGS for brake performance, REACH, and RoHS compliance
- 100% in-process optical inspection of components
- Detailed reports for brakes and rotors with each delivery
- Hydraulic and mechanical brakes
- Contract manufacturing services available

## TEST LIST AND FREQUENCY

TEST NAME	DESCRIPTION	FREQUENCY
<b>EX-WORKS BRAKE TEST</b>	180N for 250 cycles + 300 seconds consistent pressure	100%
<b>HI-TEMPERATURE BRAKE TEST</b>	70,000 cycles, 120° C	EVERY WEEK
<b>LOW-TEMPERATURE BRAKE TEST</b>	1,500 cycles, -20° C	EVERY WEEK
<b>NORMAL-TEMPERATURE BRAKE TEST</b>	70,000 cycles	EVERY BATCH
<b>EN/ISO BRAKE FORCE TEST</b>	According to EN 15194 / ISO 4210	EVERY ORDER
<b>DISC BRAKE LIFE TEST</b>	DIN 79100, 3000 cycles	EVERY 3 MONTHS
<b>HEAT RESISTANCE TEST</b>	Double test (2 cycles of 2x15 minutes) at higher standard	EVERY ORDER
<b>EN/ISO BRAKE FORCE TEST AT CHINA TEST</b>	According to EN 15194 / ISO 4210	EVERY 3 MONTHS
<b>CYCLES - SAFETY REQUIREMENTS FOR BICYCLES - PART 4: BRAKING TEST</b>	According to ISO 4210-4:2014	ON DEMAND



FEATURED PRODUCT OFFERINGS

## 4-PISTON HYDRAULIC DISC BRAKE

**H-M808**



## 4-PISTON CALIPER FOR ELECTRIC BICYCLES

**POWERFUL BRAKING FORCE:** Featuring an open system and bilateral braking structure, the 4-piston caliper delivers powerful and reliable braking performance, ideal for electric bicycles.

**ENHANCED DURABILITY:** The caliper includes large brake pads that enhance wear resistance, ensuring stable and efficient braking over time. This design meets the specific braking requirements of electric bicycles.

**CONVENIENT MAINTENANCE:** The pull-up type pads are easy to replace, and optional cooling pads help dissipate excess heat during braking, reducing heat exhaustion and ensuring consistent long-term performance.

**USER-FRIENDLY DESIGN:** The caliper offers easy assembly, adjustment, and maintenance. The integrated master oil cylinder and closed oil reservoir structure prevent issues such as oil leakage and air intake, enhancing overall safety and reliability.

**ADJUSTABLE BRAKE LEVER:** The brake lever reach can be easily adjusted to suit individual preferences.

**EFFICIENT INSTALLATION:** The lock catch type installation allows for assembly without removing the bar sleeve, simplifying the setup process.

## 4-PISTON HYDRAULIC DISC BRAKE

**EH-M908**



## 4-PISTON CALIPER FOR ELECTRIC BICYCLES

**POWERFUL BRAKING FORCE:** Featuring an open system and bilateral braking structure, the 4-piston caliper delivers powerful and reliable braking performance, ideal for electric bicycles.

**ENHANCED DURABILITY:** The 4-piston caliper with large brake pads enhances wear resistance, ensuring high stability and efficiency. This design perfectly meets the braking requirements of electric bicycles.

**CONVENIENT MAINTENANCE:** The pull-up type pads are easy to replace. Optional cooling pads help dissipate excess heat during braking, reducing heat exhaustion and ensuring consistent long-term performance.

**USER-FRIENDLY DESIGN:** The caliper offers easy assembly, adjustment, and maintenance. The integrated master oil cylinder and closed oil reservoir structure prevent issues such as oil leakage and air intake, enhancing overall safety and reliability.

**ADJUSTABLE BRAKE LEVER:** The brake lever reach can be easily adjusted to suit individual preferences.

**EFFICIENT INSTALLATION:** The lock catch type installation allows for secure setup without removing the handlebar grip.

**4-PISTON POWER-CUTOFF HYDRAULIC BRAKE****EH-M928**

**ALUMINUM ALLOY FORGED CALIPER BODY:** Ensures durability and lightweight construction.

**OPEN SYSTEM:** Provides efficient and reliable braking performance.

**BILATERAL BRAKING 4-PISTON CALIPER:** Delivers strong braking force, making it perfectly suitable for electric bicycles.

**NON-CORROSIVE MINERAL OIL:** Features excellent heat expansion properties for reliable performance under varying conditions.

**LARGE-SIZE PADS:** Enhance wear resistance, ensuring high stability and efficiency.

**EASY BRAKE PAD REPLACEMENT:** Compatible with heat-dissipating pads for improved performance and simplified maintenance.

**MOUNT TYPE:** Supports both International Standard Mount and Post Mount types.

**REVERSE VERSION CALIPER AVAILABLE:** Provides additional installation flexibility.

**BRAKE LEVER**

**FORGED ALUMINUM LEVER/CAST ALUMINUM BRACKET:** Ensures strength and durability.

**CLOSED OIL TANK SYSTEM:** Supplies oil into the pipe, providing a compensating effect to support the brake system.

**REED SWITCH ELECTRIC CONTROL LINE:** Enhances the braking system with precise control.

**LOCK CATCH TYPE INSTALLATION:** Allows installation without removing the handlebar grip.

**FINISH:** Available in black.

## 2-PISTON HYDRAULIC DISC BRAKE

### Y-2



**OPEN SYSTEM, 2-PISTON DESIGN:** Provides efficient braking performance.

**FORGED ALUMINUM ALLOY CALIPER BODY:** Ensures durability and lightweight construction.

**AUTOMATIC PAD COMPENSATION FUNCTION:** Maintains optimal braking performance by adjusting pad position as they wear.

**EASY PAD REPLACEMENT:** Simplifies maintenance and reduces downtime.

**NON-CORROSIVE MINERAL BRAKE OIL:** Features excellent heat expansion resistance properties, ensuring reliable performance under varying conditions.

**COMPATIBILITY:** Compatible with Avid pads and offers an optional cooling pad for enhanced heat management.

### MODEL SELECTION

- **Y-2 BASIC MODEL:** Standard configuration for general use.
- **Y-2A QUICK-JOIN MODEL:** Designed for internal hose routing for a cleaner setup.
- **Y-2S ADJUSTABLE MODEL:** Features hoses that can be adjusted at any angle for flexibility.
- **Y-2AS ADVANCED MODEL:** Combines quick-join capability with internal hose routing and fully adjustable hose angles.

### LEVER OPTIONS

Available in 2-finger, 3-finger, and 4-finger configurations, as well as a specialized lever for children.

## 2-PISTON HYDRAULIC DISC BRAKE

### H-M802



**OPEN SYSTEM, 2-PISTON DESIGN:** Provides efficient and reliable braking performance.

**FORGED ALUMINUM ALLOY CALIPER BODY:** Ensures durability and lightweight construction.

**AUTOMATIC PAD COMPENSATION FUNCTION:** Maintains optimal braking performance by automatically adjusting pad position as they wear.

**EASY PAD REPLACEMENT:** Simplifies maintenance and reduces downtime.

**NON-CORROSIVE MINERAL BRAKE OIL:** Features excellent heat expansion resistance properties, ensuring reliable performance under varying conditions.

**COMPATIBILITY:** Compatible with Avid pads and offers an optional cooling pad for enhanced heat management.

**PIVOTED HANDLEBAR LOCK:** Allows for secure locking without removing the handlebar grip.

### MODEL SELECTION

- **H-M802 BASIC MODEL:** Standard configuration for general use.
- **H-M802A MODEL:** Features internal hose routing for a cleaner setup.
- **H-M802S MODEL:** Equipped with a swivelable hose connection for greater flexibility.
- **H-M802AS MODEL:** Combines internal hose routing with a swivelable hose connection.

### LEVER OPTIONS

Available in 2-finger and 3-finger configurations.

## 2-PISTON HYDRAULIC DISC BRAKE

### H-R805



**OPEN SYSTEM, 2-PISTON DESIGN:** Provides efficient and reliable braking performance.

**FORGED ALUMINUM ALLOY CALIPER BODY:** Ensures durability and lightweight construction.

**AUTOMATIC PAD COMPENSATION FUNCTION:** Maintains optimal braking performance by automatically adjusting pad position as they wear.

**EASY PAD REPLACEMENT:** Simplifies maintenance and reduces downtime.

**NON-CORROSIVE MINERAL BRAKE OIL:** Features excellent heat expansion resistance properties, ensuring reliable performance under varying conditions.

**COMPATIBILITY:** Compatible with Avid pads and offers an optional cooling pad for enhanced heat management.

**PIVOTED HANDLEBAR LOCK:** Allows for secure locking without removing the handlebar grip.

**FLAT MOUNT TYPE:** Suitable for road bikes.

### MODEL SELECTION

- **H-M802 BASIC MODEL:** Standard configuration for general use.
- **H-M802A MODEL:** Features internal hose routing for a streamlined appearance.
- **H-M802S MODEL:** Equipped with a swivelable hose connection for enhanced flexibility.
- **H-M802AS MODEL:** Combines internal hose routing with a swivelable hose connection for maximum versatility.

### LEVER OPTIONS

Available in 2-finger and 3-finger configurations.

## 2-PISTON HYDRAULIC DISC BRAKE

### EH-M232



**OPEN SYSTEM, 2-PISTON DESIGN:** Provides efficient and reliable braking performance.

**FORGED ALUMINUM ALLOY CALIPER BODY:** Ensures durability and lightweight construction.

**AUTOMATIC PAD COMPENSATION FUNCTION:** Maintains optimal braking performance by automatically adjusting pad position as they wear.

**EASY PAD REPLACEMENT:** Simplifies maintenance and reduces downtime.

**NON-CORROSIVE MINERAL BRAKE OIL:** Features excellent heat expansion resistance properties, ensuring reliable performance under varying conditions.

**COMPATIBILITY:** Compatible with Avid pads and offers an optional cooling pad for enhanced heat management.

**2-PIECE LOCK TYPE INSTALLATION:** Allows secure setup without removing the handlebar grip.

**REED SWITCH ELECTRIC CONTROL LINE:** Enhances the braking system with precise control.

#### MODEL SELECTION

- **EH-M232 BASIC MODEL:** Standard configuration for general use.
- **EH-M232A MODEL:** Features internal hose routing for a streamlined appearance.
- **EH-M232S MODEL:** Equipped with a swivelable hose connection for enhanced flexibility.
- **EH-M232AS MODEL:** Combines internal hose routing with a swivelable hose connection for maximum versatility.

#### LEVER OPTIONS

Available in 2-finger, 3-finger, and 4-finger configurations.

## 2-PISTON HYDRAULIC DISC BRAKE

### H-C212



**OPEN SYSTEM, 2-PISTON DESIGN:** Provides efficient and reliable braking performance.

**FORGED ALUMINUM ALLOY CALIPER BODY:** Ensures durability and lightweight construction.

**AUTOMATIC PAD COMPENSATION FUNCTION:** Maintains optimal braking performance by automatically adjusting pad position as they wear.

**EASY PAD REPLACEMENT:** Simplifies maintenance and reduces downtime.

**NON-CORROSIVE MINERAL BRAKE OIL:** Features excellent heat expansion resistance properties, ensuring reliable performance under varying conditions.

**COMPATIBILITY:** Compatible with Avid pads and offers an optional cooling pad for enhanced heat management.

**2-PIECE LOCK TYPE INSTALLATION:** Allows secure setup without removing the handlebar grip.

### MODEL SELECTION

- **H-C212 BASIC MODEL:** Standard configuration for general use.
- **H-C212A MODEL:** Features internal hose routing for a streamlined appearance.
- **H-C212S MODEL:** Equipped with a swivelable hose connection for enhanced flexibility.
- **H-C212AS MODEL:** Combines internal hose routing with a swivelable hose connection for maximum versatility.



**ZDC(Z/M)**

\*Available in:  
 -120mm  
 -140mm  
 -145mm  
 -160mm  
 \*6-bolt  
 \*Center Distance 44mm(Z) 48mm(M)  
 \*inside Dia 33mm(Z) 37mm(M)



**ZDE(Z/M)**

\*Available in:  
 -140mm  
 -145mm  
 -160mm  
 \*6-bolt  
 \*Center Distance 44mm(Z)  
 48mm(M)  
 \*inside Dia 33mm(Z) 37mm(M)



**ZDG-160Z**

\*Available in:  
 -160mm  
 \*6-bolt  
 \*Center Distance 44mm  
 \*inside Dia 33mm



**ZDJ-160Z**

\*Available in:  
 -160mm  
 \*6-bolt  
 \*Center Distance 44mm  
 \*inside Dia 33mm



**ZDR(Z/M)**

\*Available in:  
 -140mm  
 -160mm  
 -180mm  
 -203mm(Z)  
 \*6-bolt  
 \*Center Distance 44mm(Z)  
 48mm(M)  
 \*inside Dia 33mm(Z) 37mm(M)



**ZDS-140/160/180Z**

\*Available in:  
 -140mm  
 -160mm  
 -180mm  
 \*6-bolt  
 \*Center Distance 50mm  
 \*inside Dia  
 33mm/35mm(160z)



**AR**

\*Available in:  
 -160mm  
 -180mm  
 \*6-bolt  
 \*Center Distance 44mm  
 \*inside Dia 33mm



**SR**

\*Available in:  
 -140mm  
 -160mm  
 -180mm  
 \*6-bolt  
 \*Center Distance 44mm  
 \*inside Dia 33mm



**ZDQ-180**

\*Mounting hole diameter:  
 74.2/74.3mm  
 \*Compatible with  
 Shimano INTER-88-speed disc brake hub



**ZDP**

\*Available in:  
 -140mm  
 -160mm  
 -180mm  
 \*Center lock disc rotor  
 \*Lightweight adapter  
 (Aluminum)



**ZDB**

\*Available in:  
 -160mm  
 -180mm  
 \*6-bolt  
 \*Center Distance 44mm  
 \*inside Dia 33mm  
 \*thickness: 2.3mm



**ZS-Z**

Ordinary six-hole card disc  
 can be converted into  
 the middle lock installation mode

## CONTACT

**MICHELLE LAI**

CENTURY PRECISION INDUSTRY CO., LTD.

MICHELLE.LAI@CENTURYPRECISION.COM.TW

+886 91609 2166

+86 182 171 96148